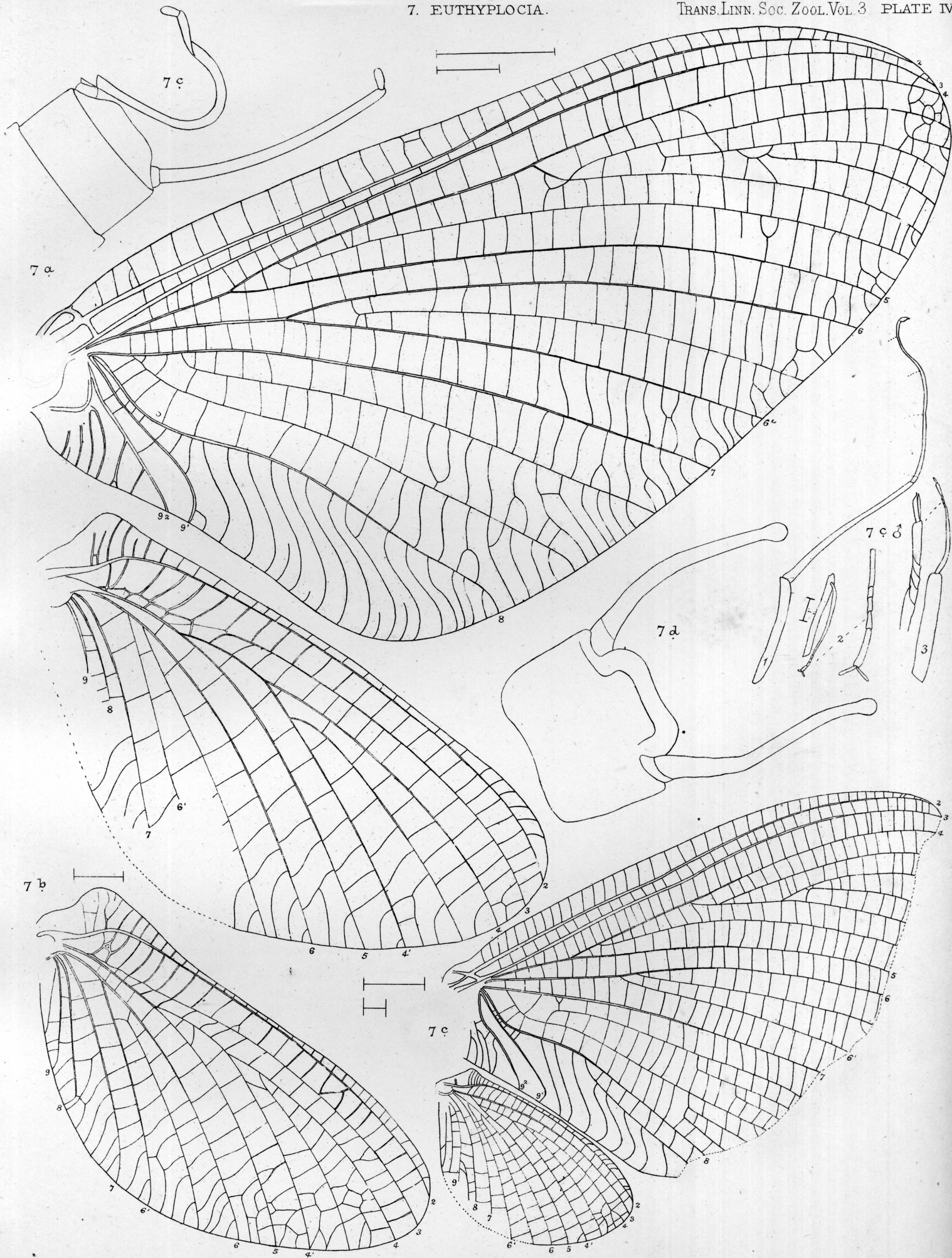


A.E. Eaton del.

2 a, *O. rhenana*. b. *O. anomala*. 3, *E. Trimeniana*.
4. *S. Trailiae*. 5. *L. abnormis*. 6. *H. Salviniae*.

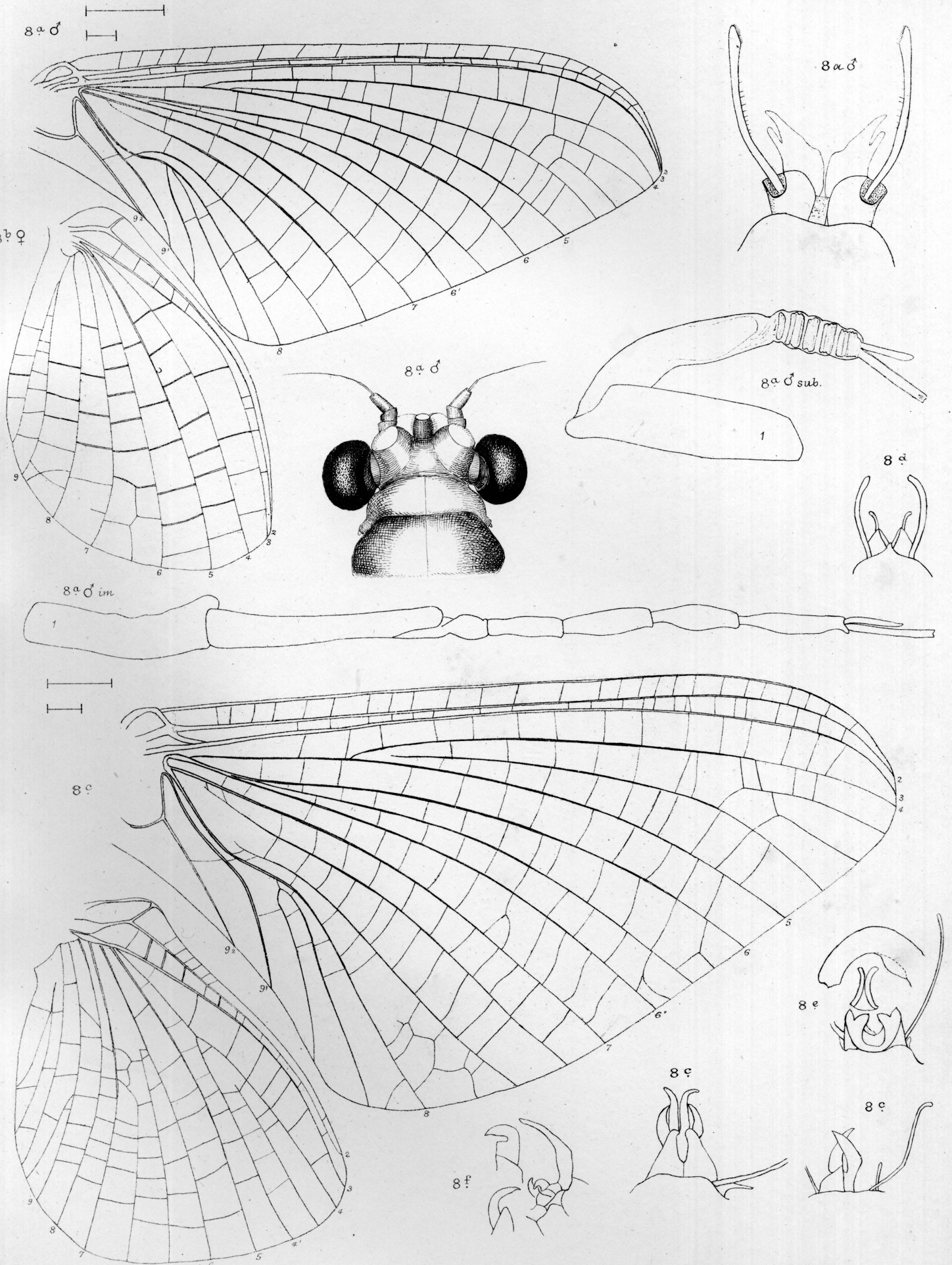
West Newman & Co. imp.



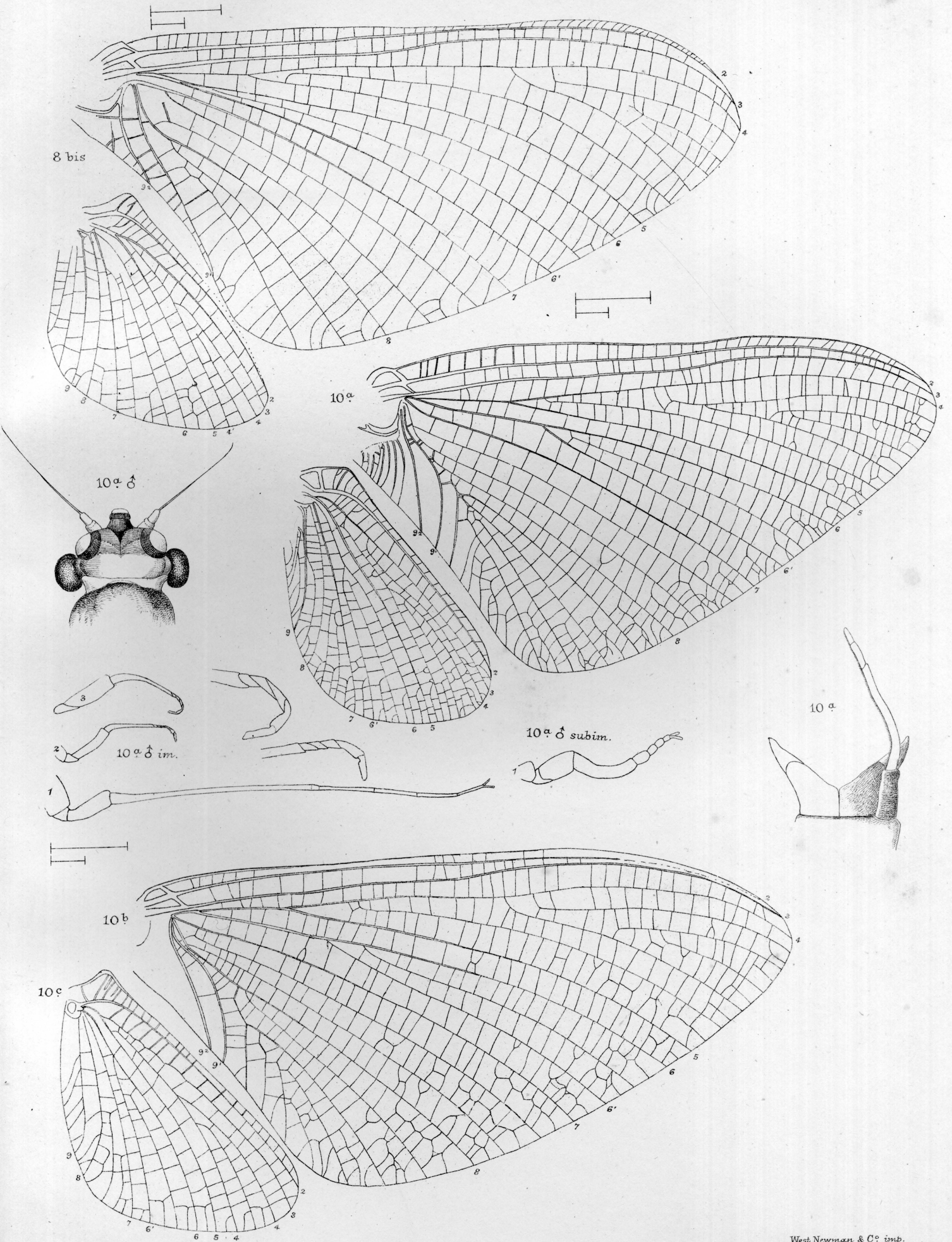
A.E. Eaton del.

West Newman & Co imp.

7a E. Hecuba. b.c.d. other species.



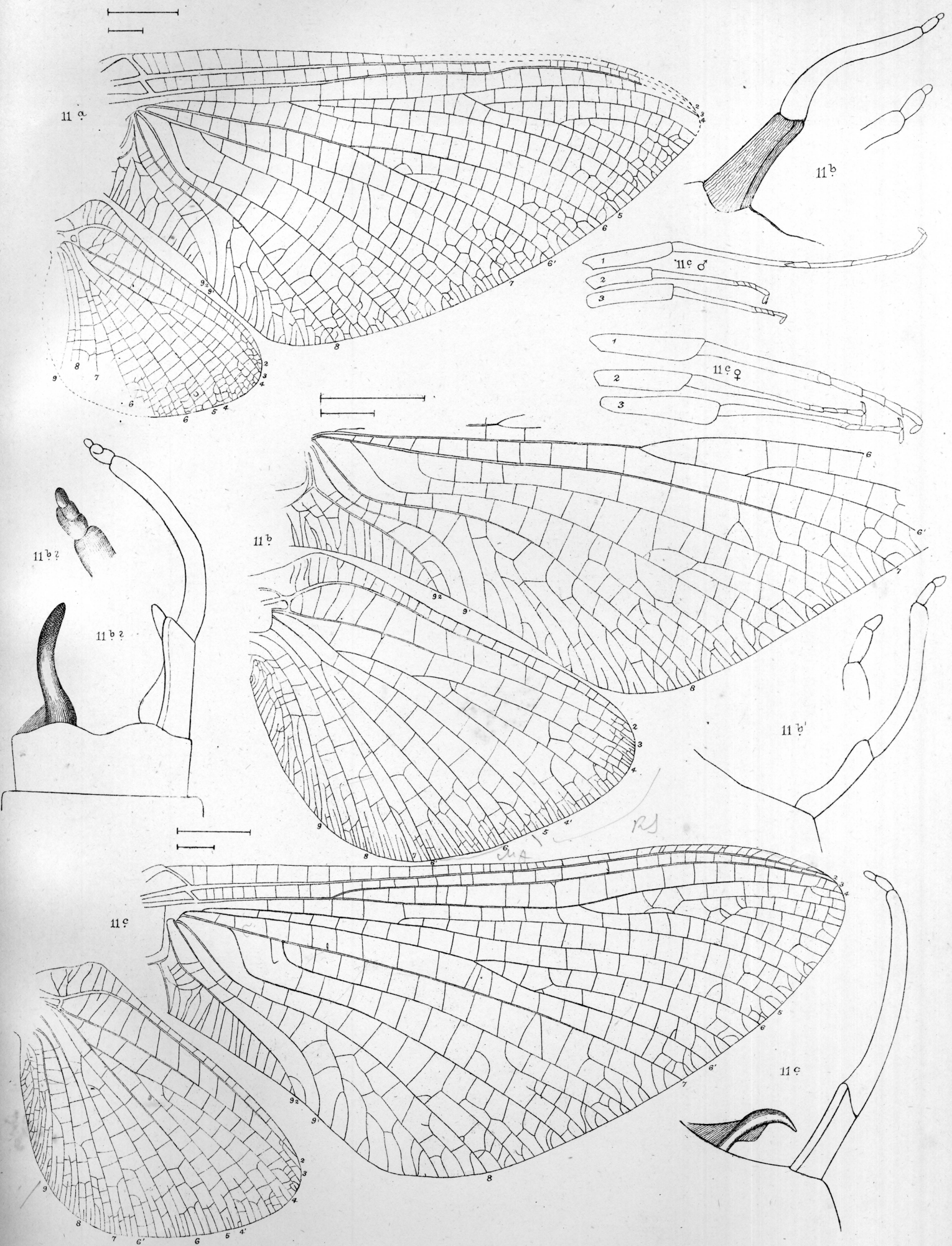
8^a ♂ *C. albifilum*, s. subimago: b, ♀, *C.* — sp[?] Texas, c, *C. latipennis*.
 d. *C. cuspidatus*. e, *C. quadridentatus*. f. *C. curtus*.

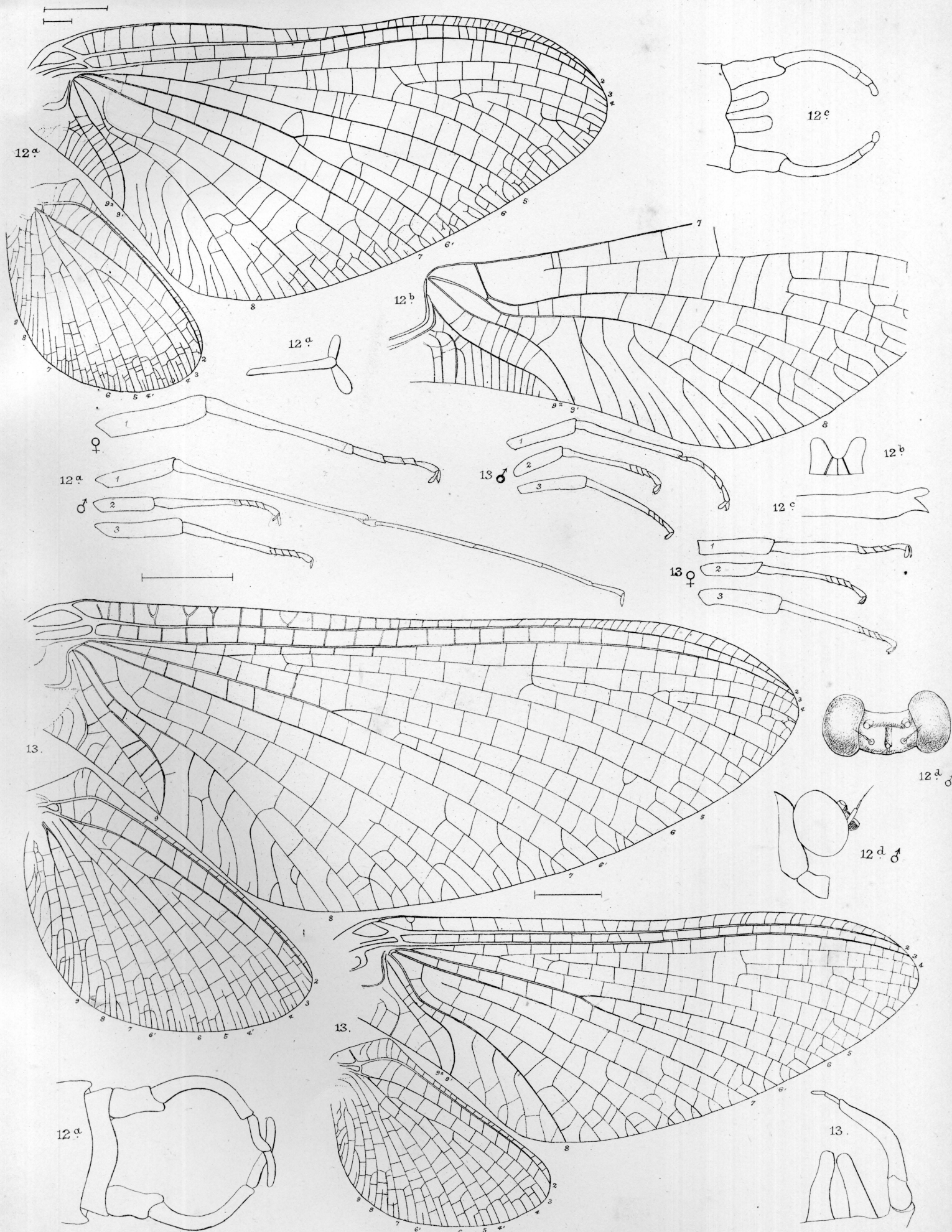


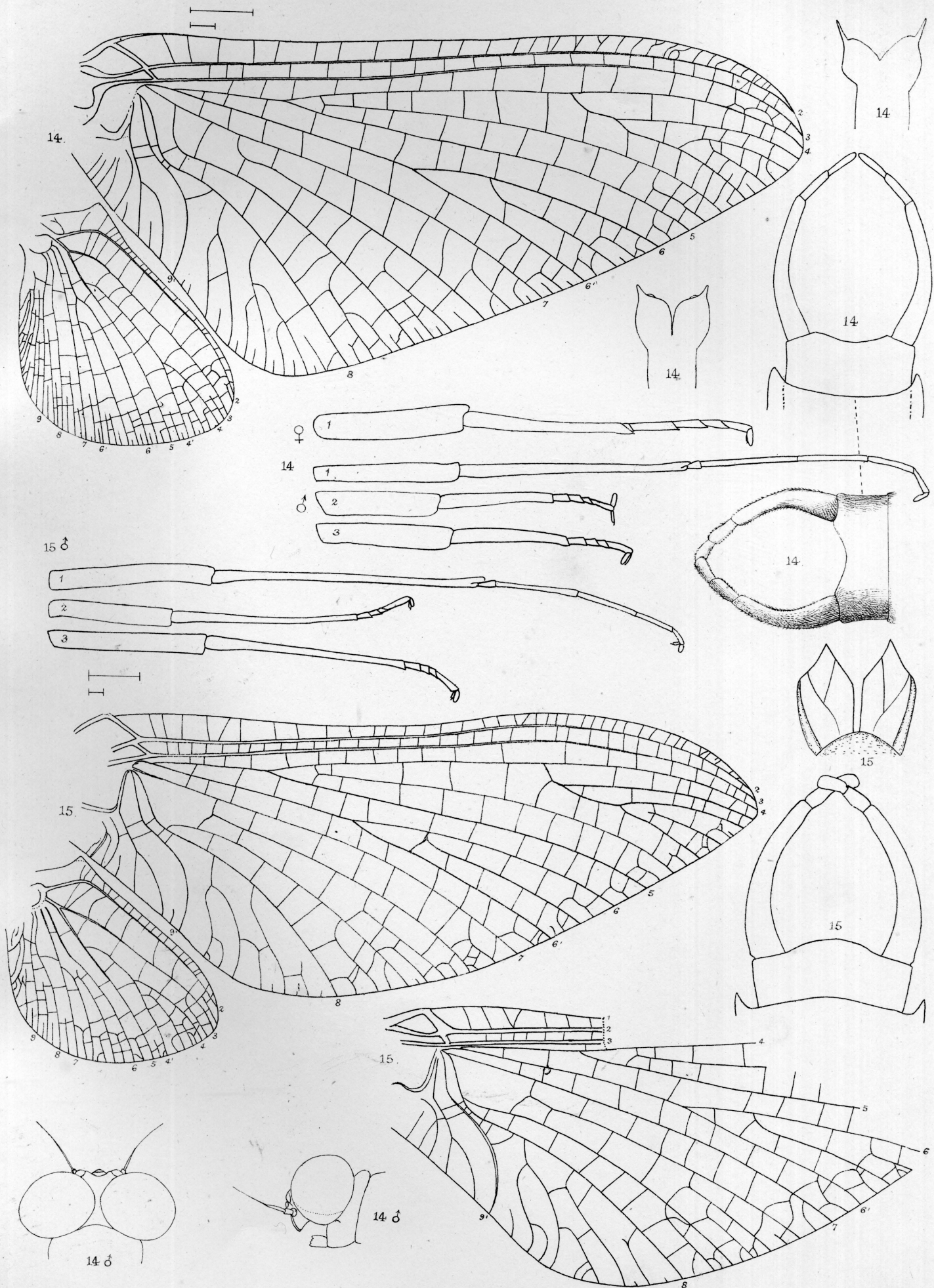
A.E. Eaton del.

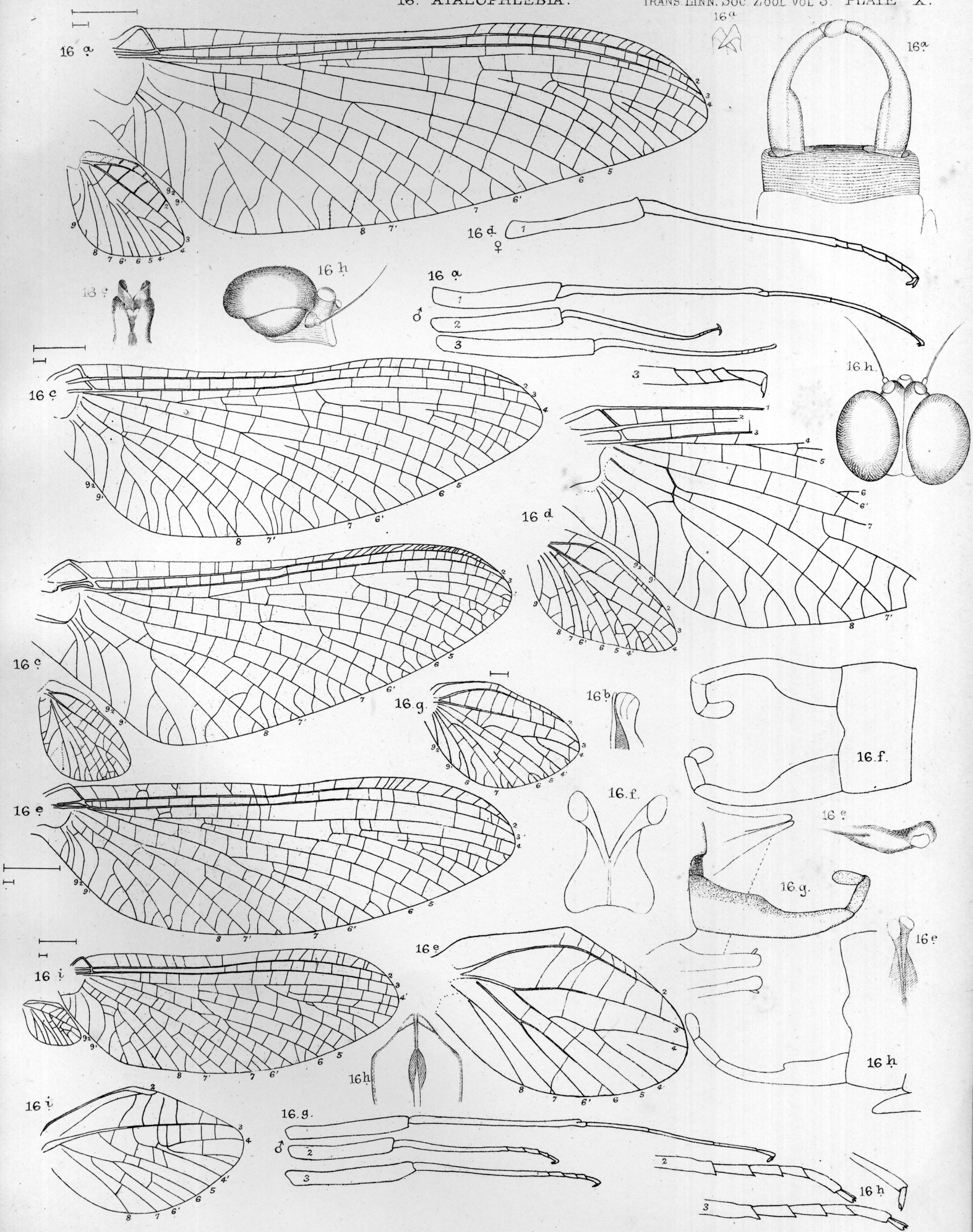
West Newman & Co imp.

10 a. *P. virgo*. 10 b. S. African sp. 10 c. N.W. Indian sp.

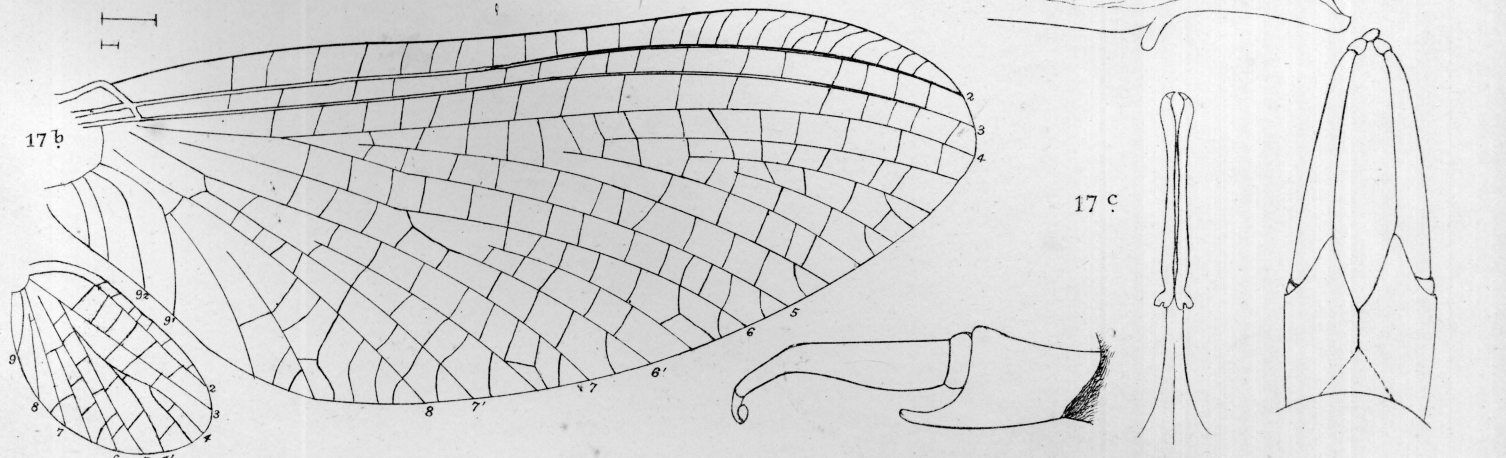
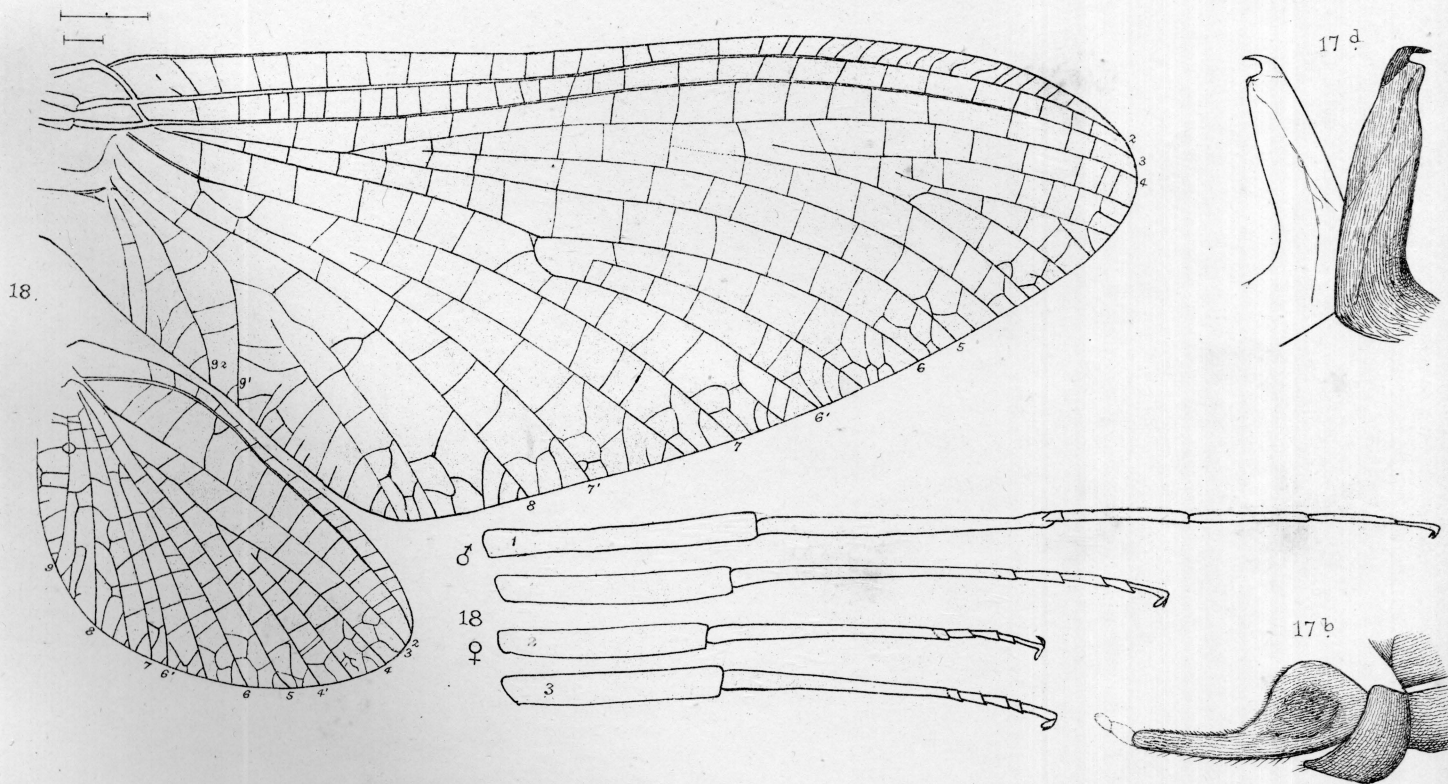
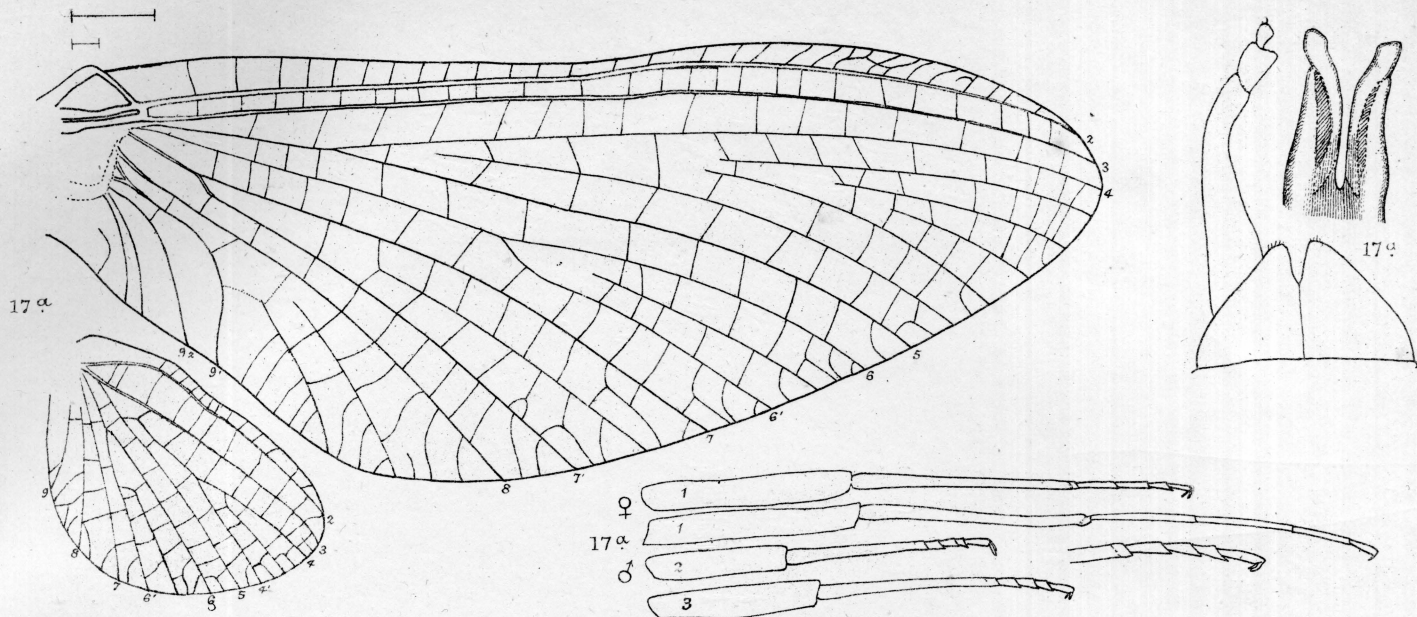








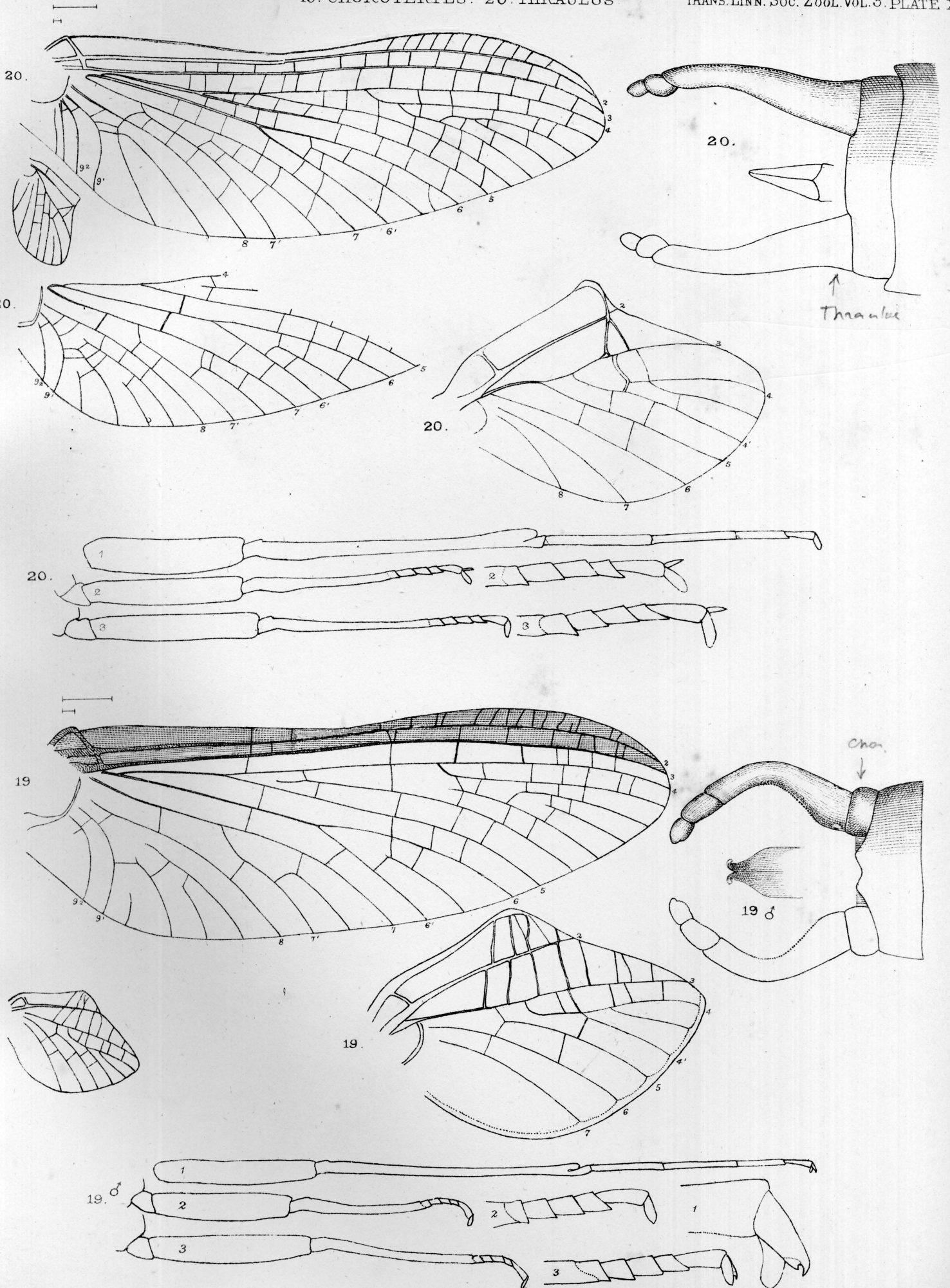
16.a. *A. annulata*. b. *A. taprobanes*. c. *A. australasica*. d. *A. strigata*.
 e. *A. nodularis*. f. *A. scita*. g. *A. chilensis*. h. *A. tabularis*.
 i. ♂ subim. from Brazil.

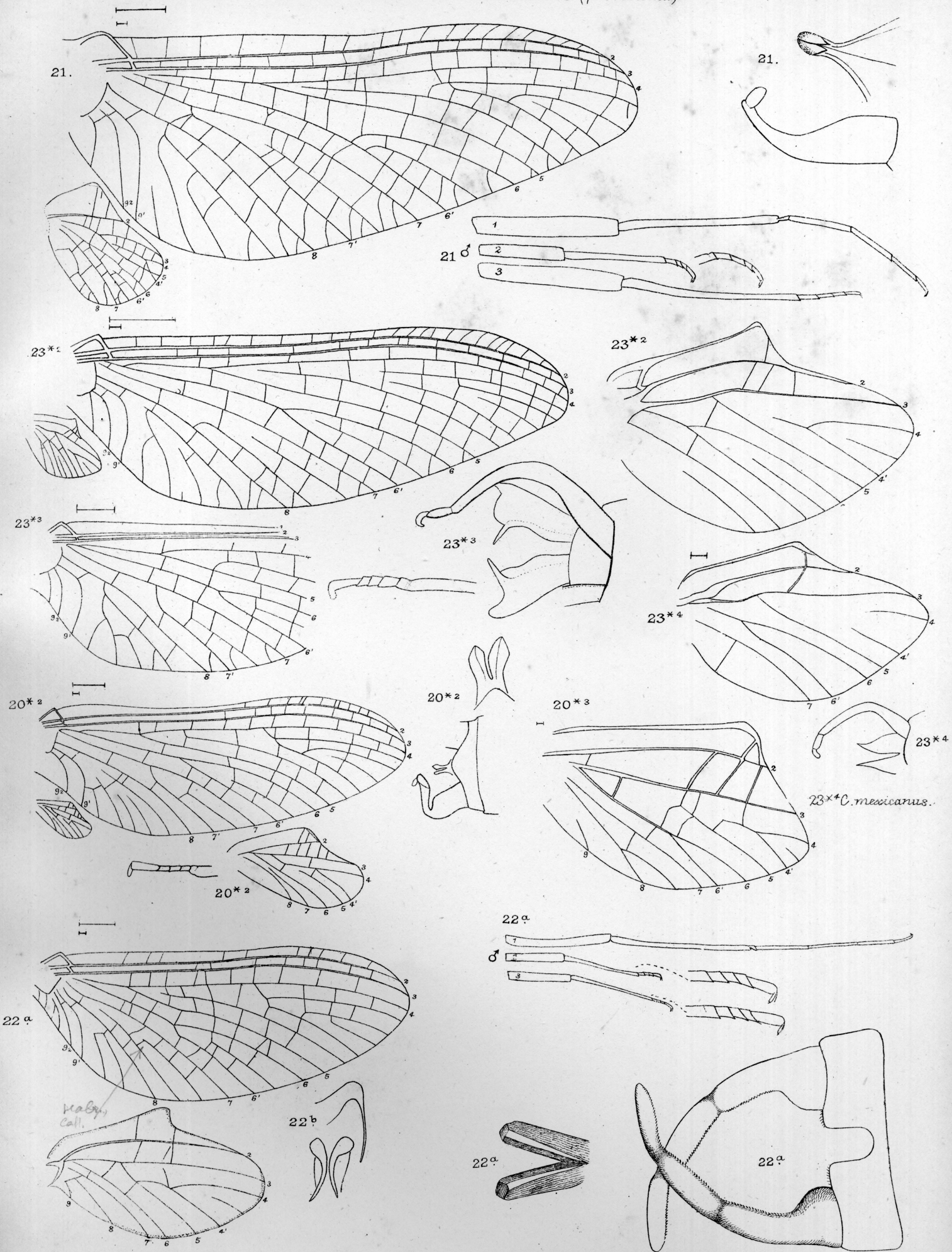


A.E. Eaton del.

17.a, *L. marginata*. b. *L. mollis*. c. *L. præpedita*.
d. *L. Meyeri*. 18. *B. concinnus*.

West Newman & Co^s imp.

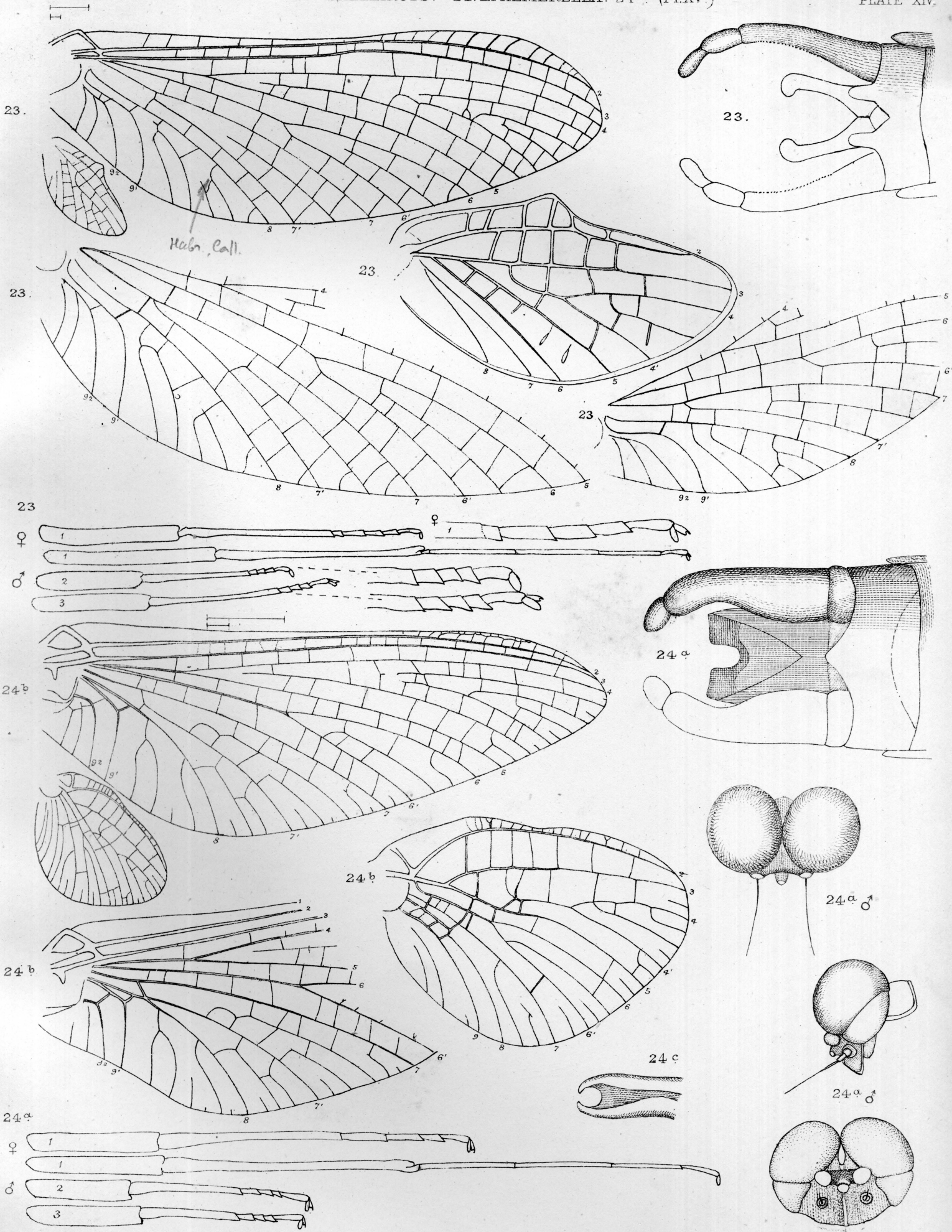




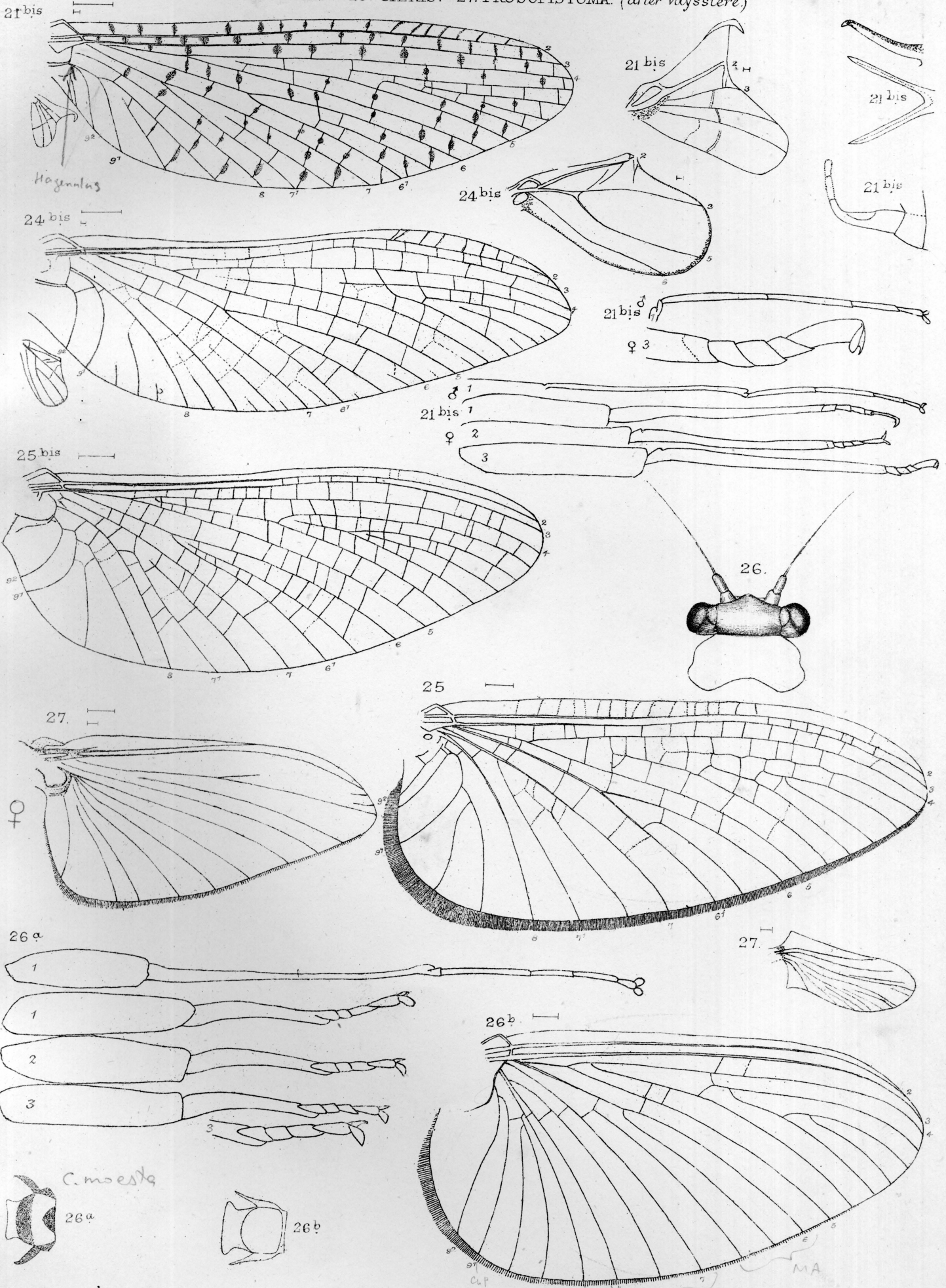
A.E. Eaton del.

20*² Th. exiguus. ³ Th. colombiæ. 21. A. dislocans.
22 a. H. fusca. b. H. modesta. 23*² C. (Costa Rica). ³ C. lætus.

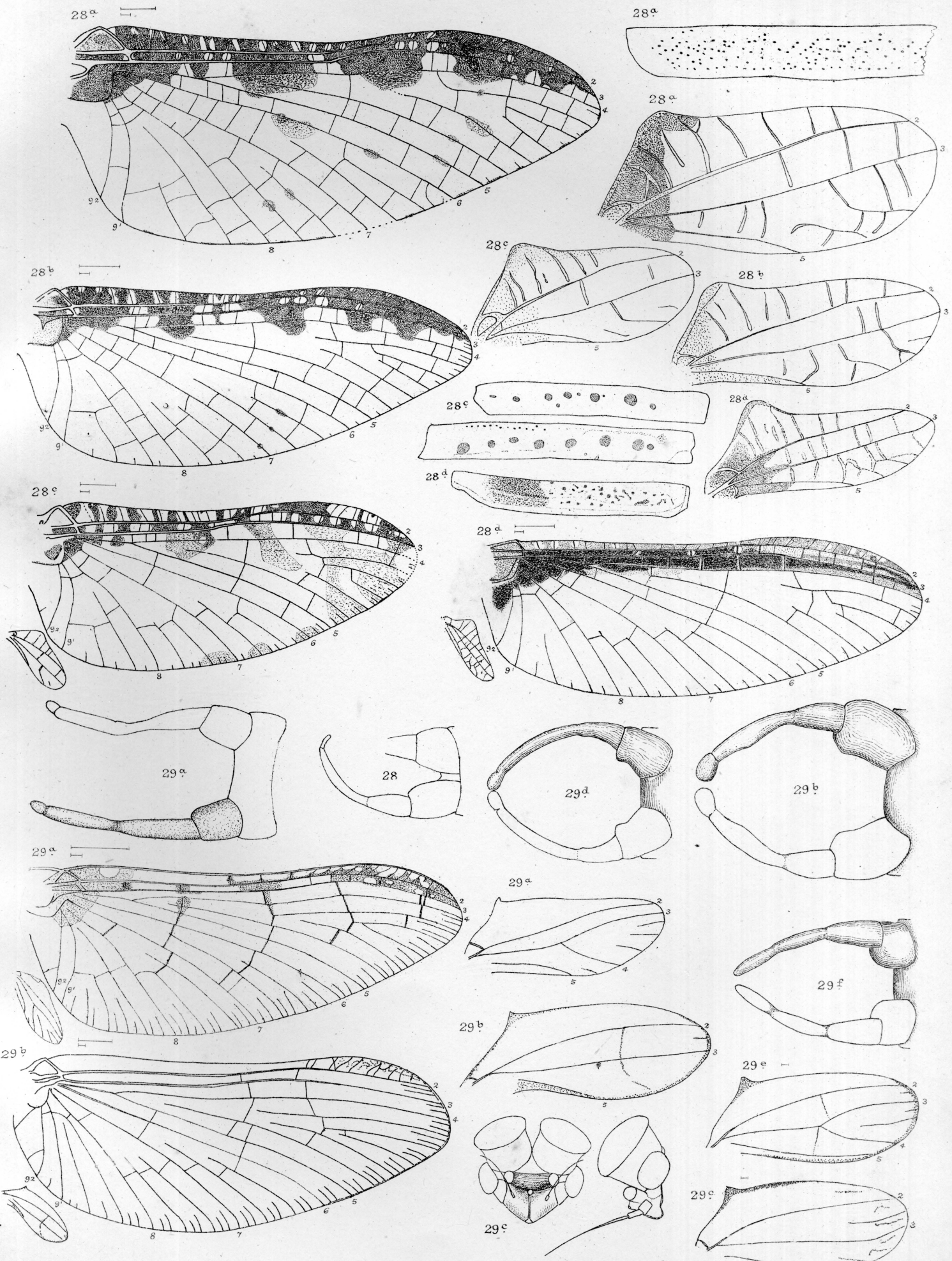
West Newman & Co^s imp.



21^{bis} HAGENULUS (21, Pl. XIII) 24^{bis} TELOGANODES (24, Pl. XIV) 25. TRICORYTHUS.
25^{bis} LEPTOHYPHES. 26. CAENIS. 27. PROSOPISTOMA. (after Vayssiére)



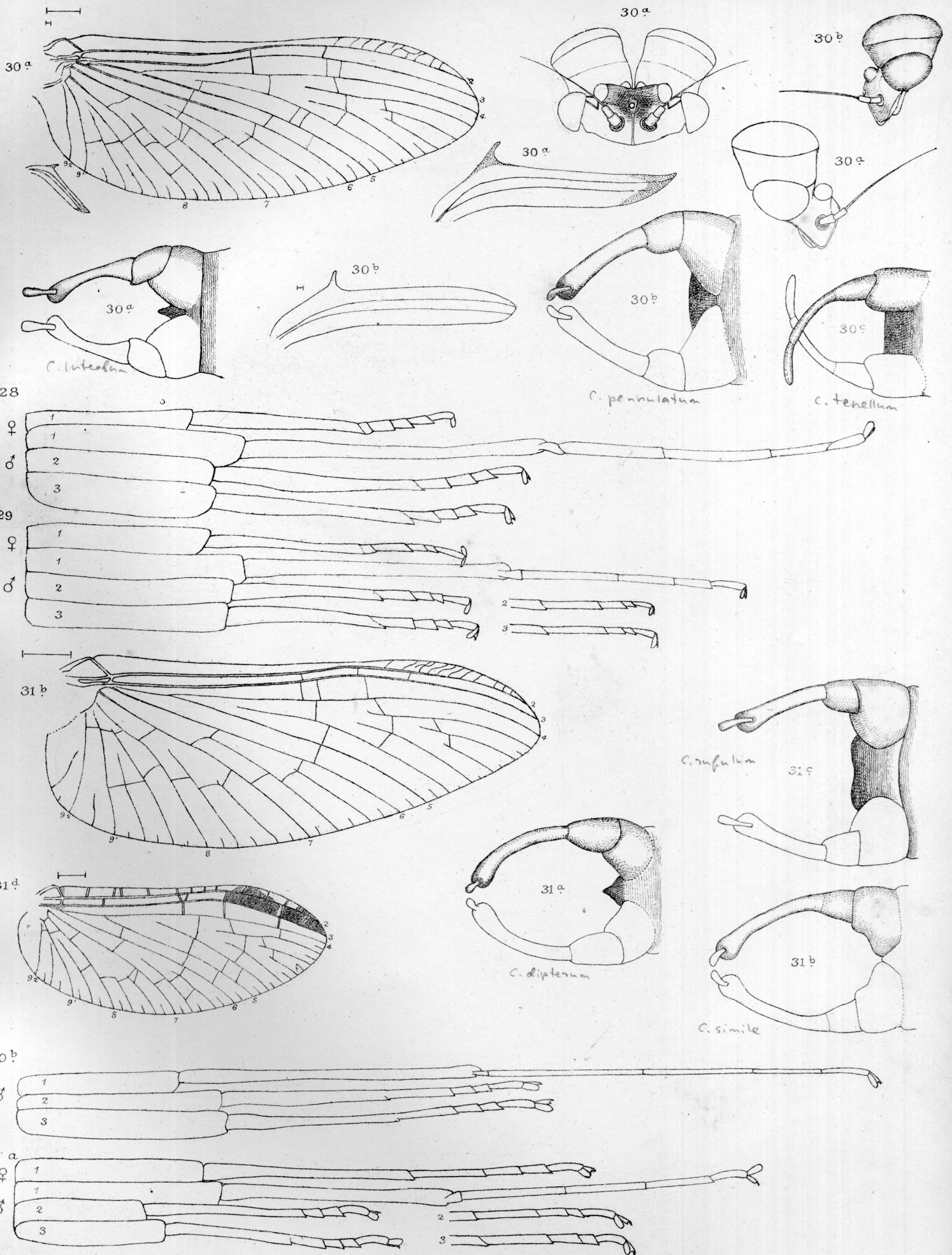
21^{bis} H. caligatus. 24^{bis} T. tristis. 25. T. (Malay sp.) 25^{bis} L. eximius.
26 a. C. halterata. b. C. dimidiata. 27. P. punctifrons. (after Vayssiére)



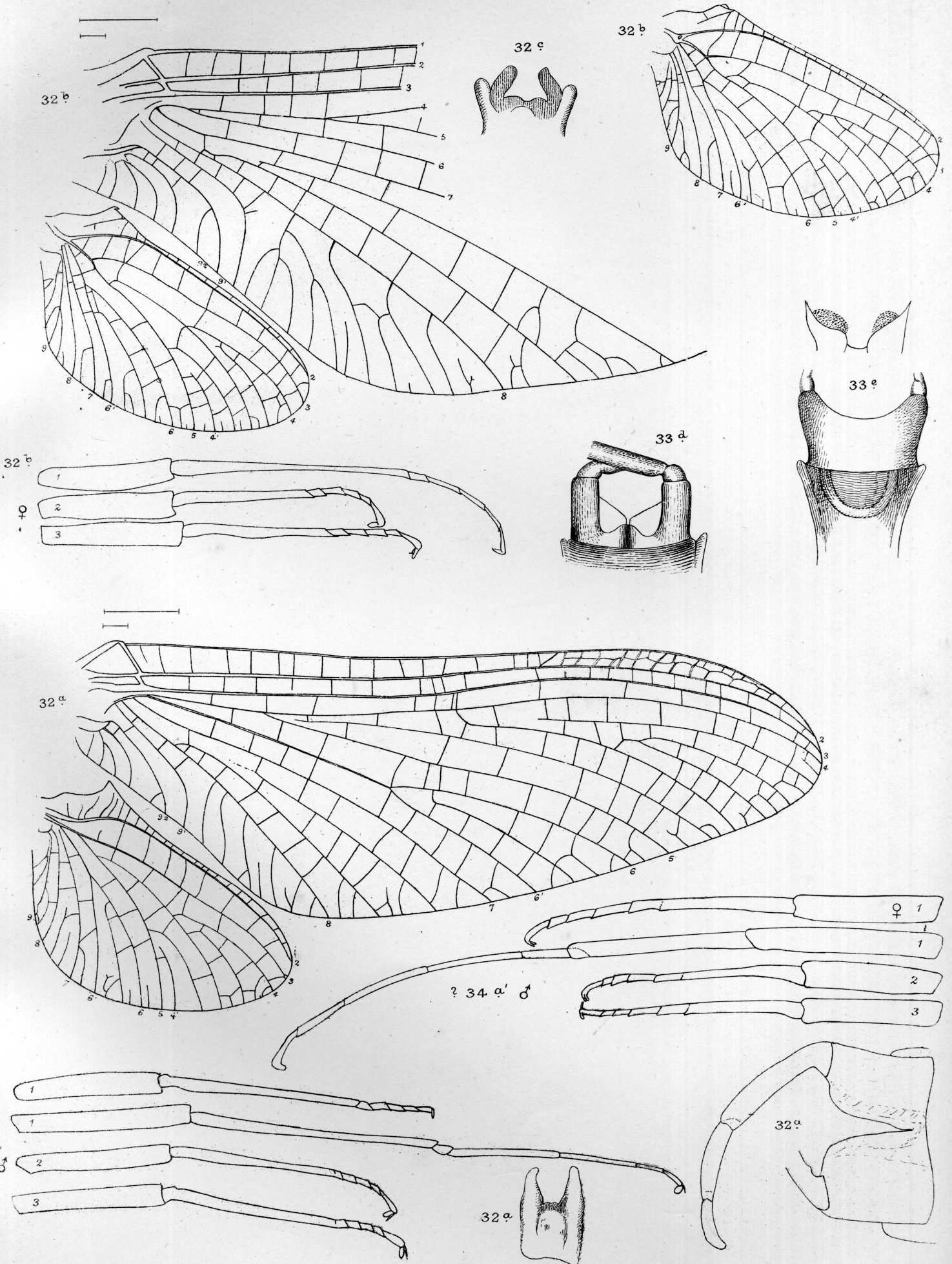
A.E. Eaton del.

28 a. *C. Hageni*. b. *C. ferrugineus*. c. *C. pictus*. d. *C. montanus*.
 29 a. *B. Salvini*. b. *B. binoculatus*. c. *B. rhodani*. d. *B. vernus*. e. *B. pumilus*. f. *B. niger*.

West Newman & Co imp.



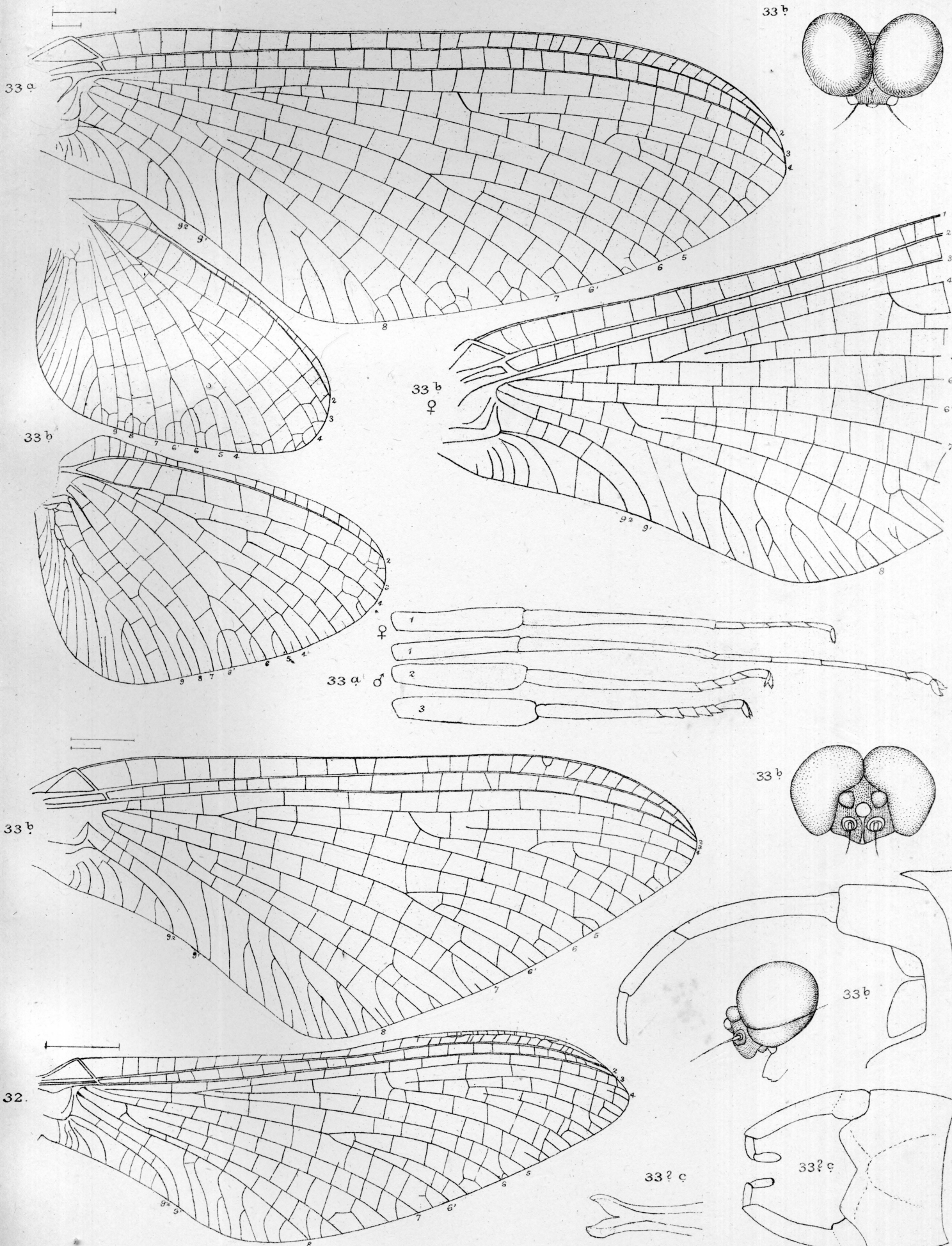
32. COLOBURUS. 33. CHIROTNETES (& PL XIX.) ? 34. SIPHLURUS ? (& PL. XX.)

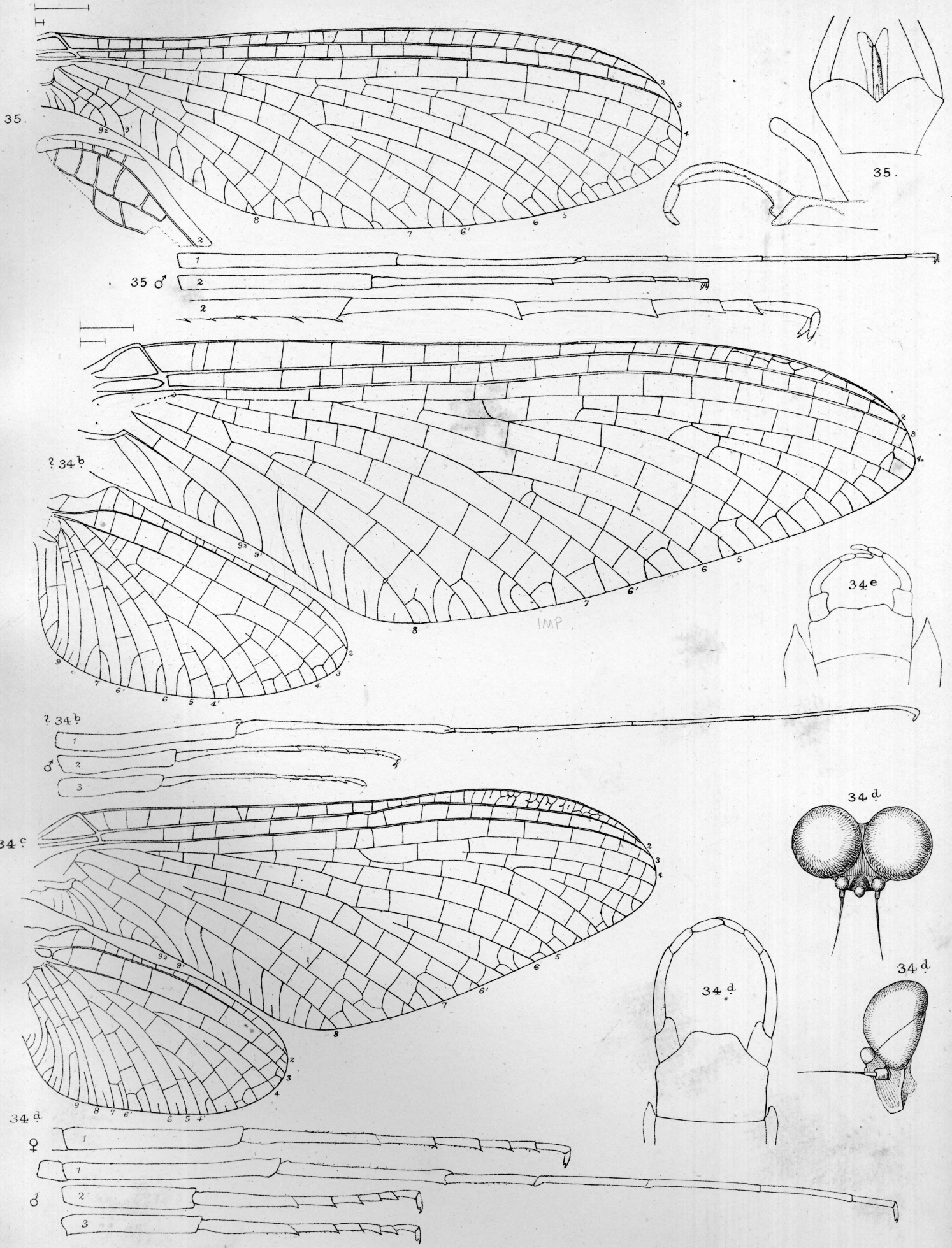


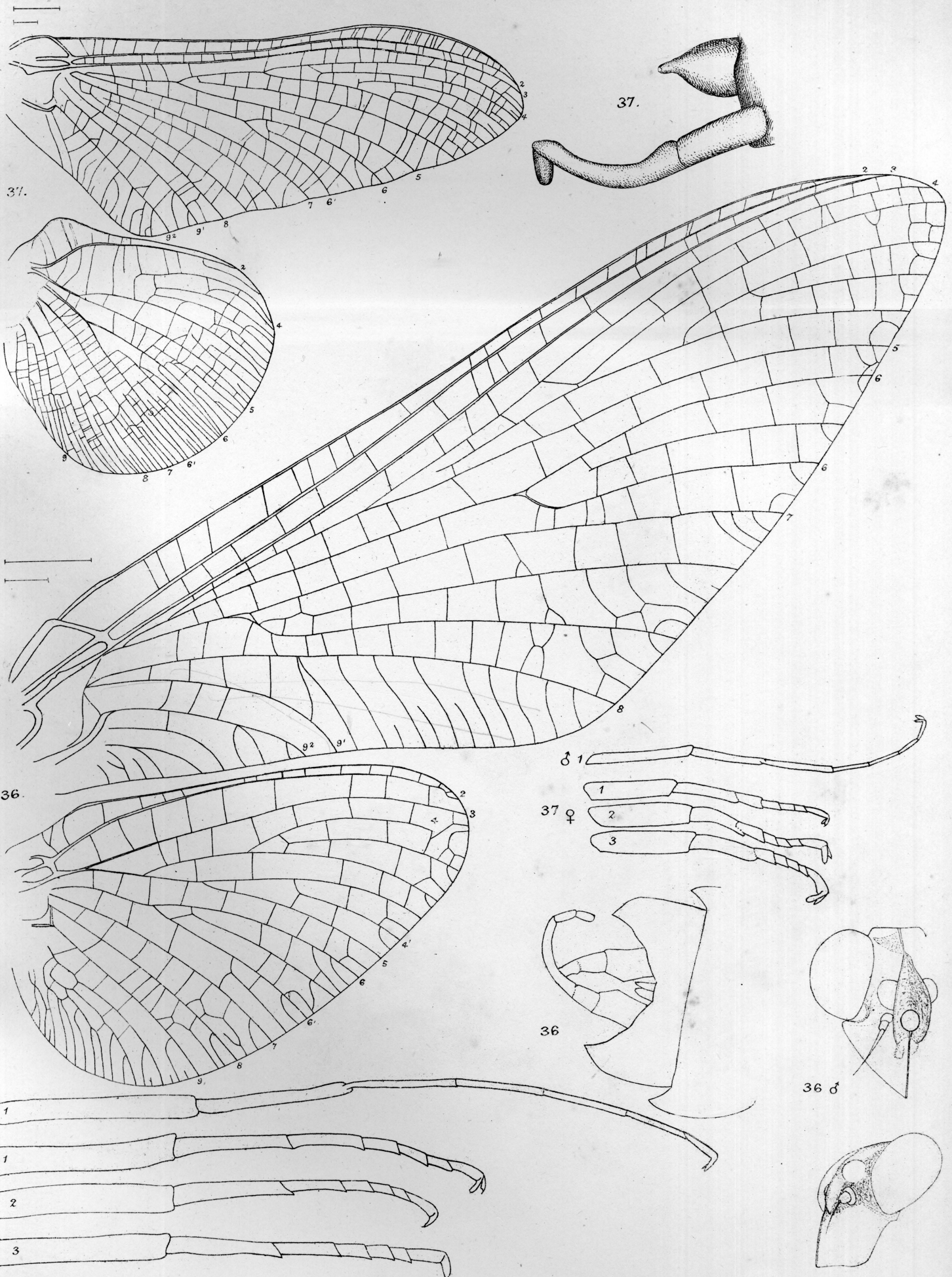
32 a, C. humeralis. b. C. (N. America) c. C. haleuticus. 33, d, Ch. siccus. e. Ch. aridus. ? 34 a', S. ? femoratus.

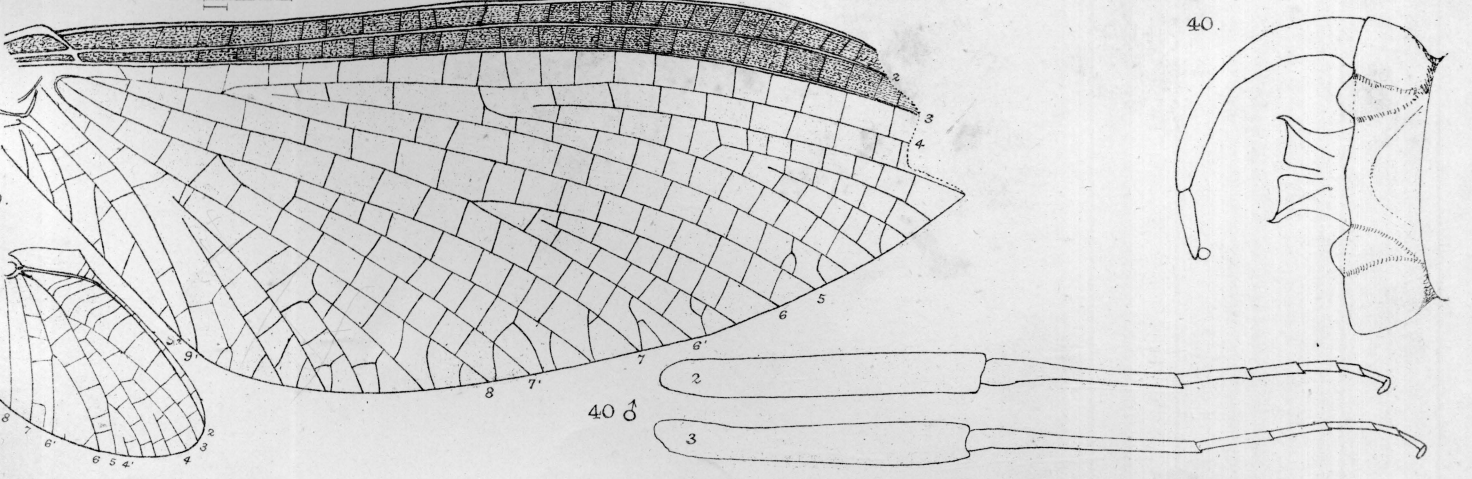
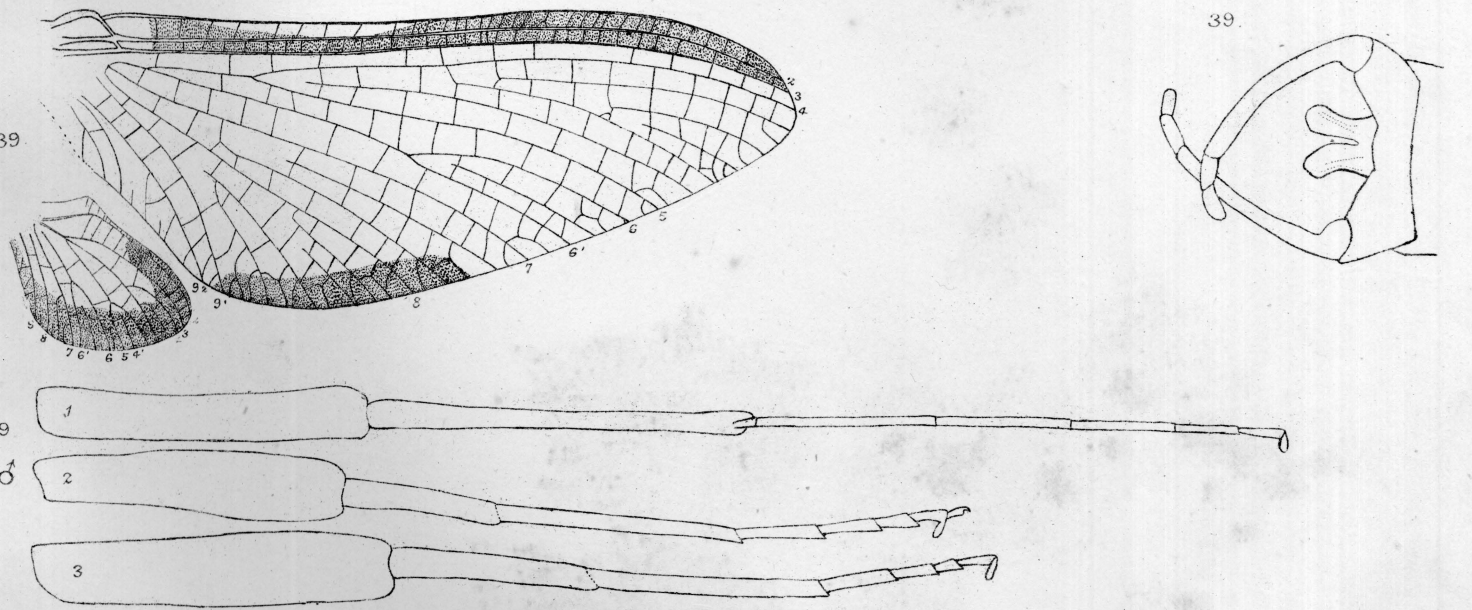
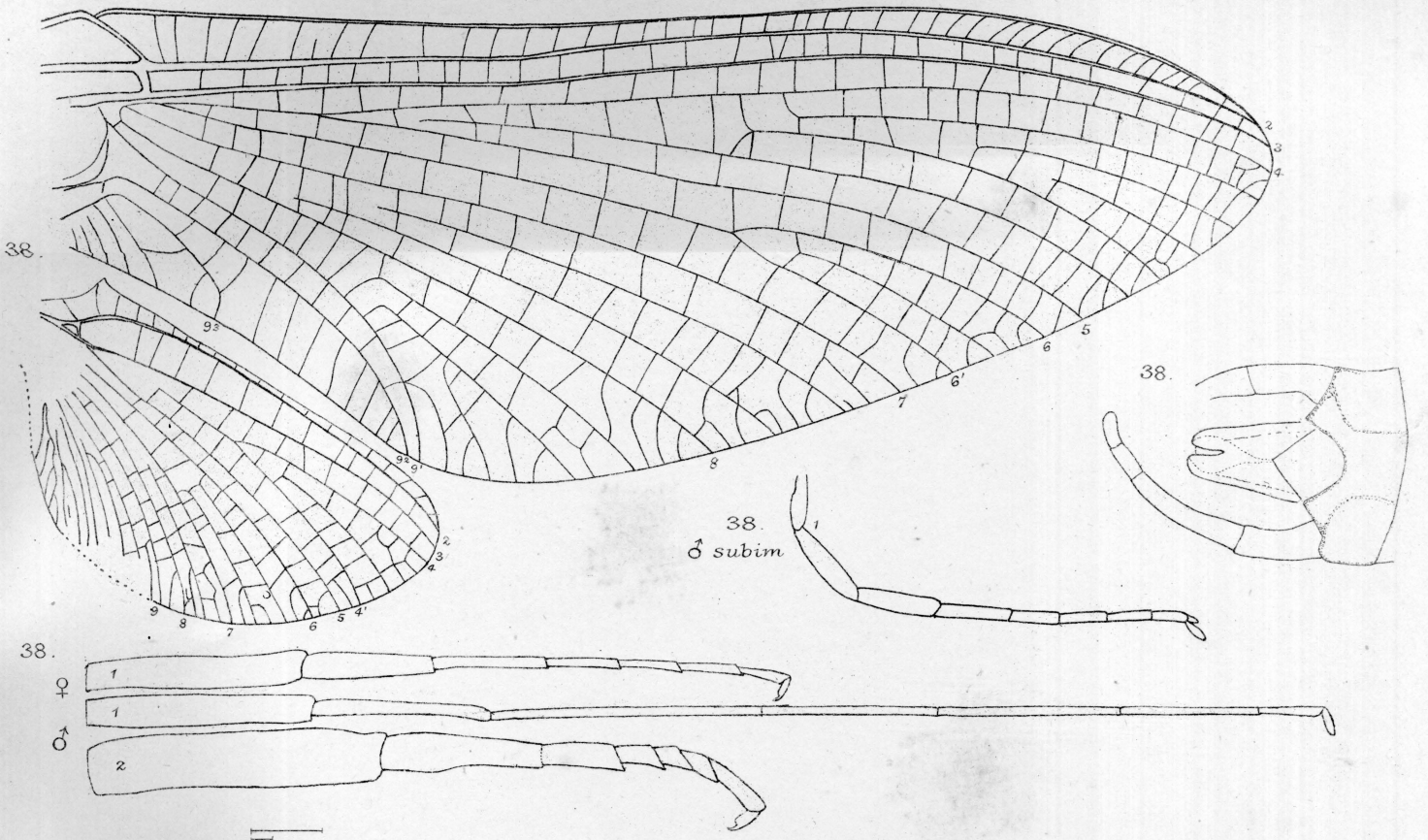
A.E. Eaton del.

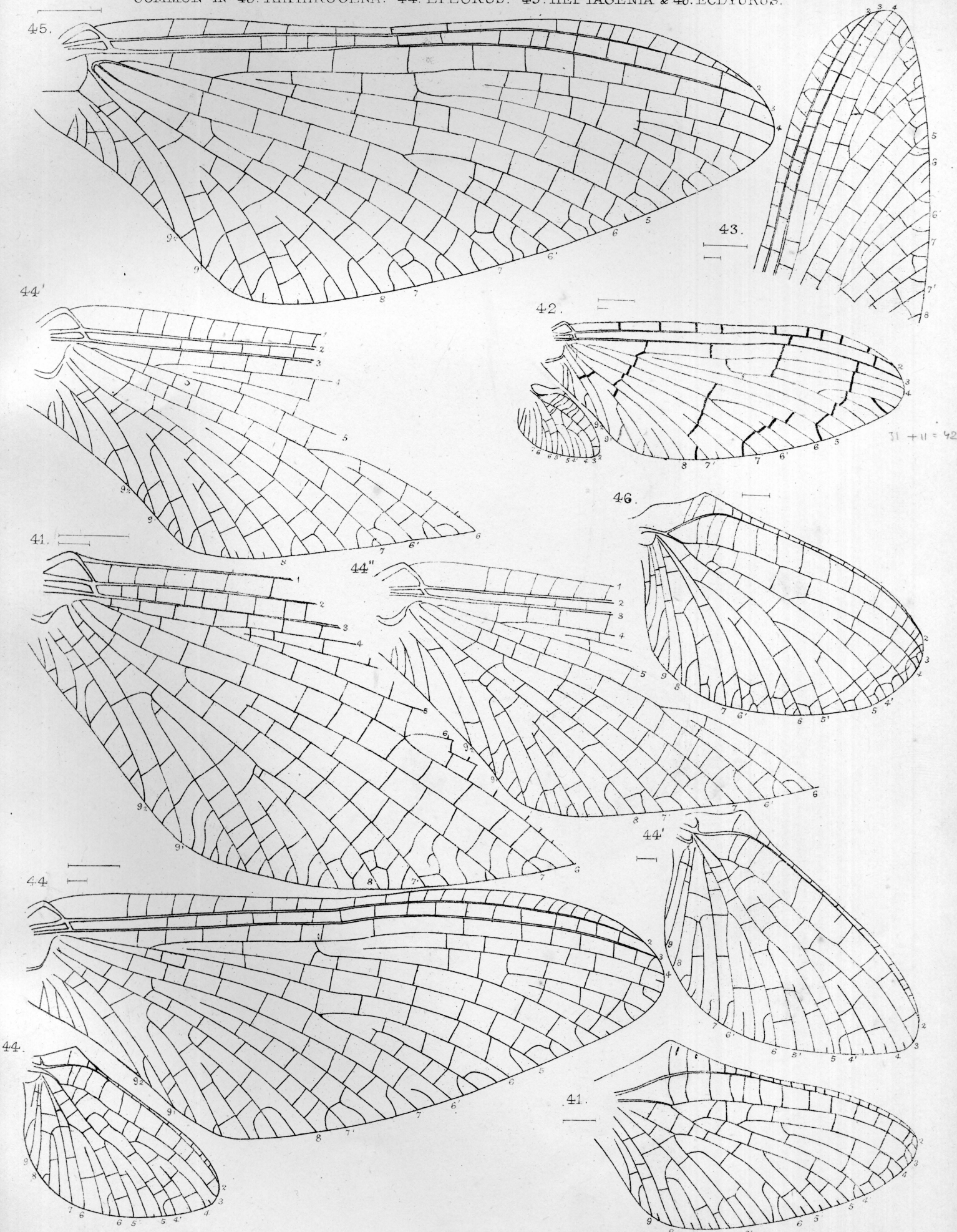
West, Newman & Co imp.











41. *P. cupulatus*. 42. *C. spectabilis*. 43. *Rh. semicolorata*. 44. *E. longimanus*.
45. *H. gallica*. 46. *E. venosus*.

Supplemental to Pl. XXIII. 41, PÆGNIODES. 42, COMPOSONEURIA.
43, RHITHROGENA. 44, (& Pl. XXIII, 44.) IRON. 44A, EPEORUS (restricted) 45, HEPTAGENIA.
46, ECDYURUS.

